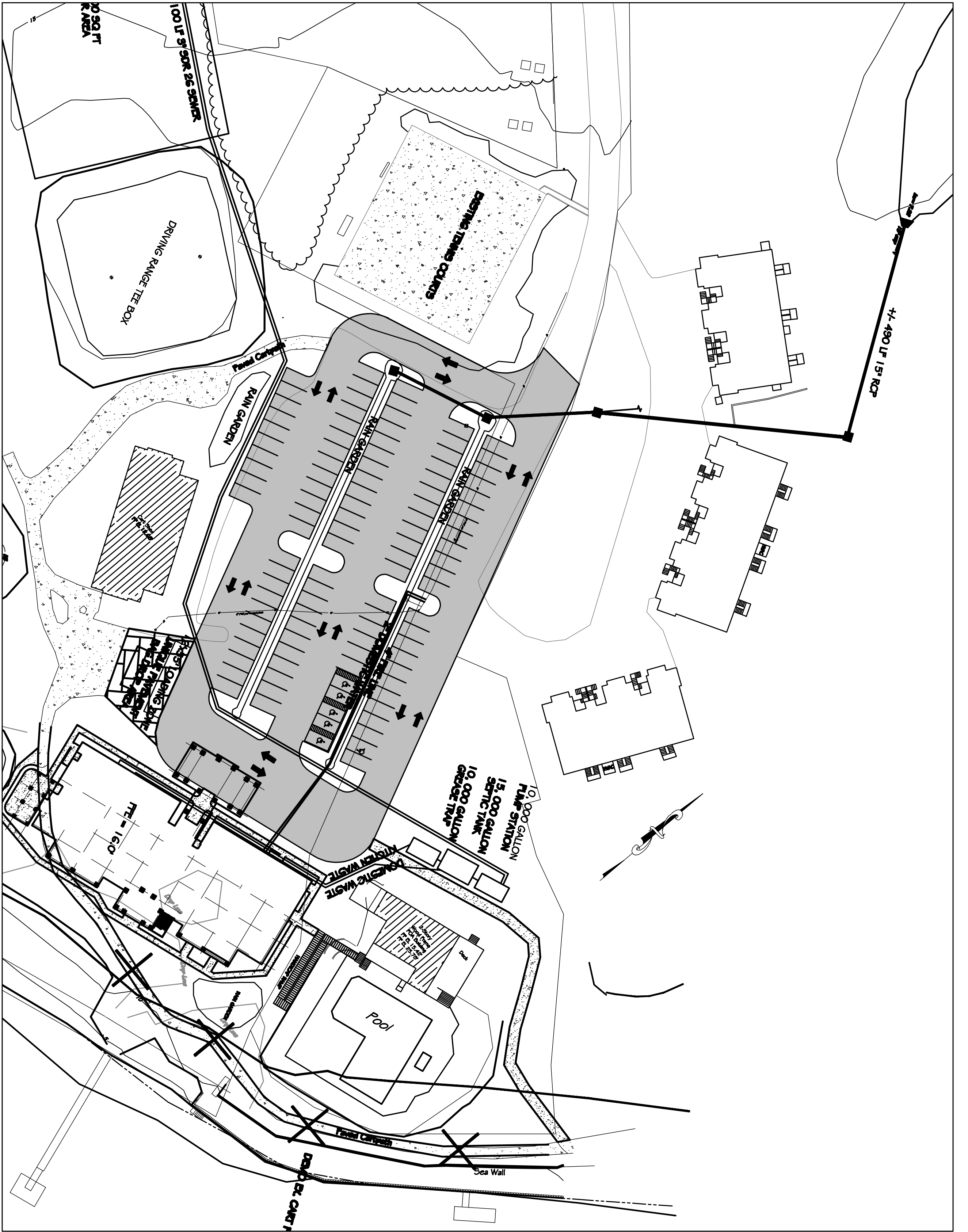
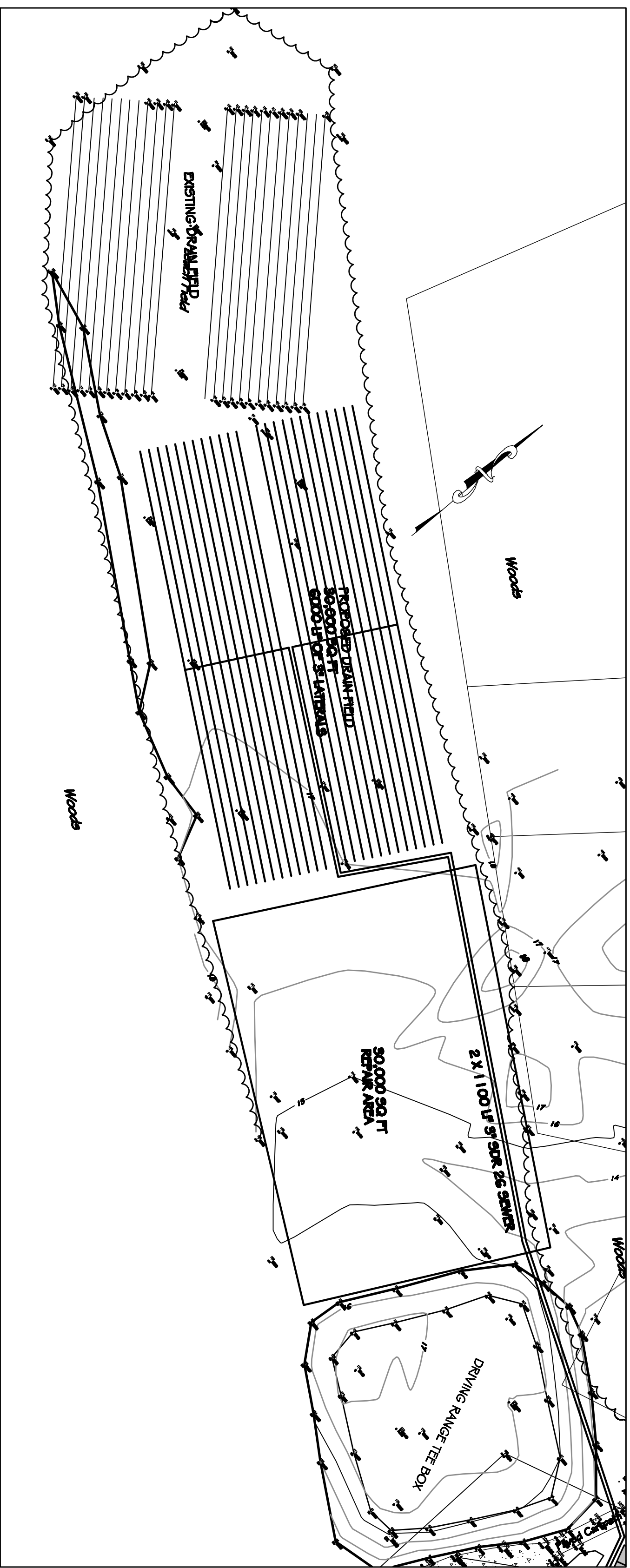
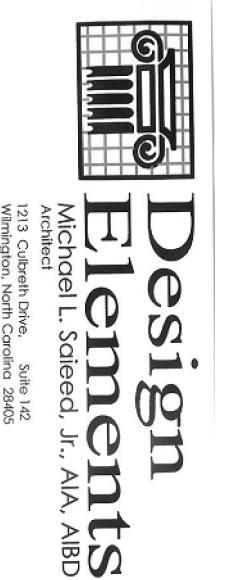
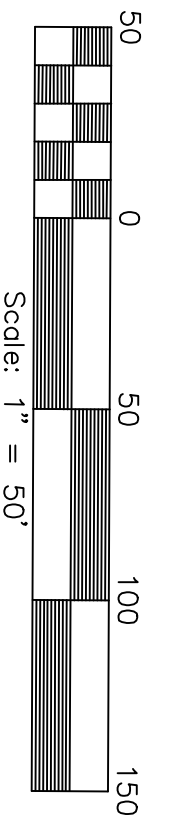


| NUMBER | DATE | REVISION |
|--------|------|----------|
|        |      |          |
|        |      |          |
|        |      |          |



**APPROXIMATE QUANTITIES**

- SEWER SYSTEM**
- 10,000 GALLON GREASE TRAP TANK
  - 15,000 GALLON SEPTIC TANK
  - 10,000 GALLON PUMP TANK
  - 2200 LF 3" SDR 26 PIPE FOR TRANSPORT
  - 6000 LF 3" SDR 26 LATERALS FOR DISPOSAL FIELD
  - 2 - 3 TO 5 HP PUMPS
  - ALARM/CONTROL PANEL/LOADS
  - MISC FITTINGS (TEES/ELBOWS/VALVES)
  - 500 LF 4" GRAVITY SEWER
- STORMWATER SYSTEM**
- 800 LF 6" PVC ROOF DRAIN/RAIN GARDEN PIPING W/ FITTINGS
  - 500 LF 15" RCP PIPE
  - 5 - 3' X 3' CONCRETE BOXES WITH GRATINGS
  - 400 CY CUT FOR RAIN GARDENS
- WATER**
- 1 - FIRE HYDRANT
  - 225LF - 2" DOMESTIC WATER (PVC)
  - 225 LF - 4" FIRE LINE (DUCITILE)



|                    |         |
|--------------------|---------|
| <b>DESIGN BY:</b>  | BDS     |
| <b>DRAWN BY:</b>   | BDS     |
| <b>CHECKED BY:</b> | BDS     |
| <b>DATE</b>        | 1/31/09 |

**PRELIMINARY UTILITY PLAN**  
**LOCKWOOD FOLLY CLUBHOUSE**  
 BRUNSWICK COUNTY, NC



1406 CASTLE HAYNE RD.  
 WILMINGTON, NC  
 910.251.1181

**JBS CONSULTING, PA**  
 7332 Cotesworth Drive  
 Wilmington, NC 28045  
 (910) 619-9990  
 Fax (910) 401-1620  
 PLANNING - ENGINEERING - CONSTRUCTION MANAGEMENT